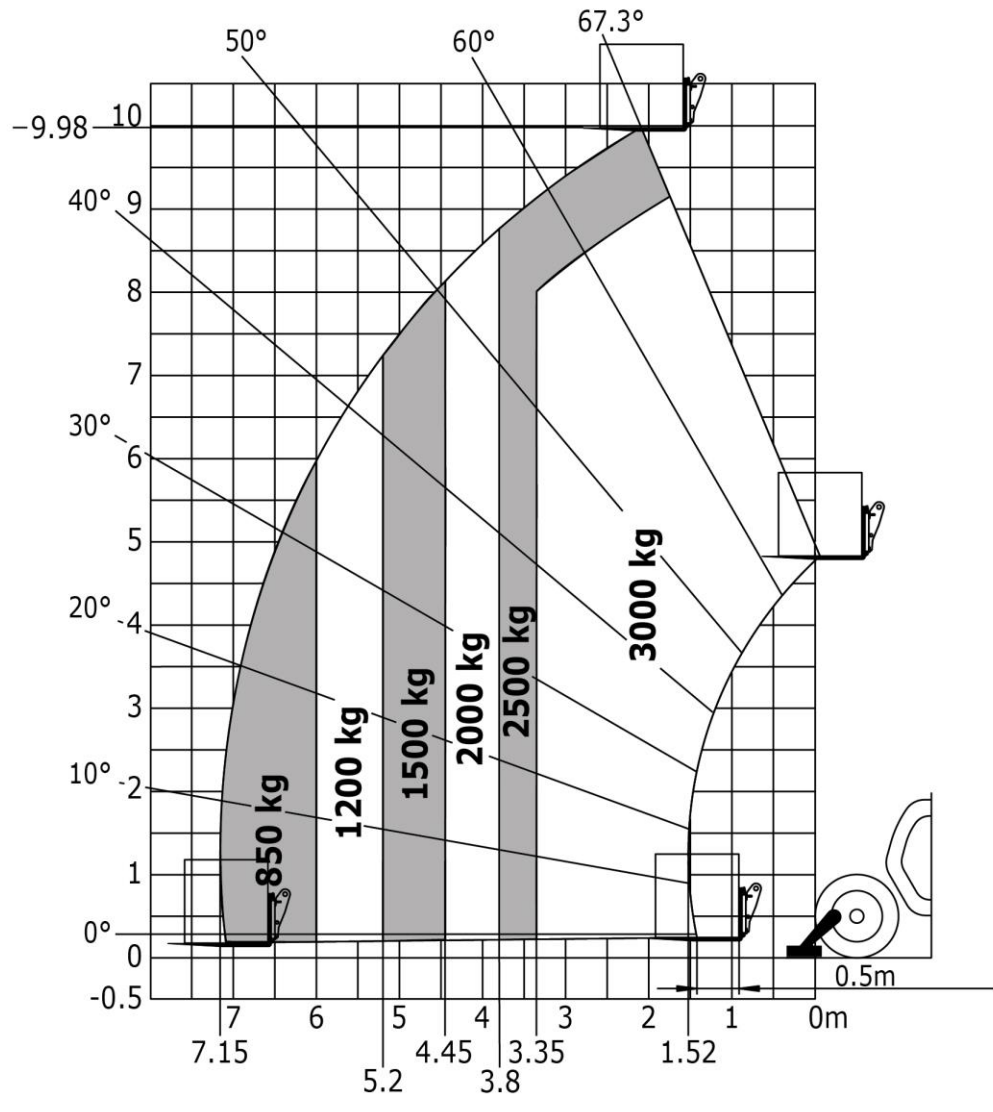
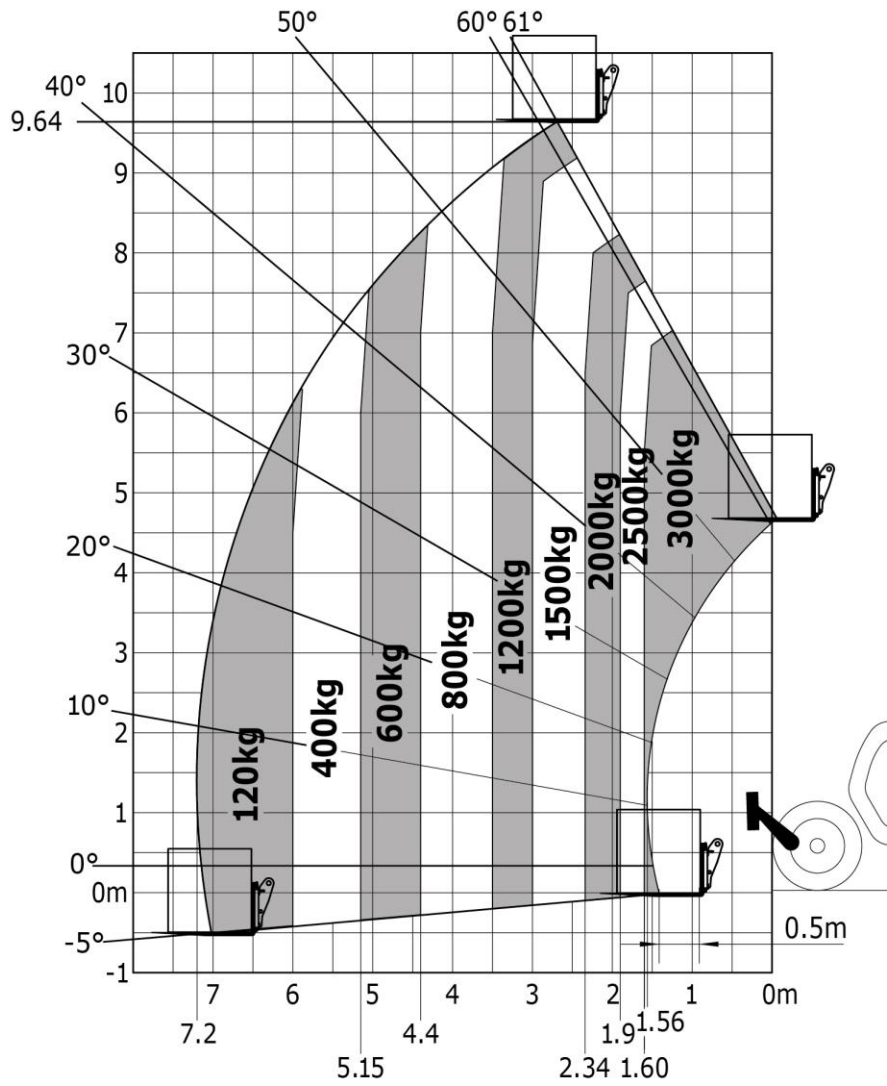


# Manitou 1030 easy Spec Sheet

Load chart (EN1459-B) with stabilisers :



Load chart (EN1459-B) :



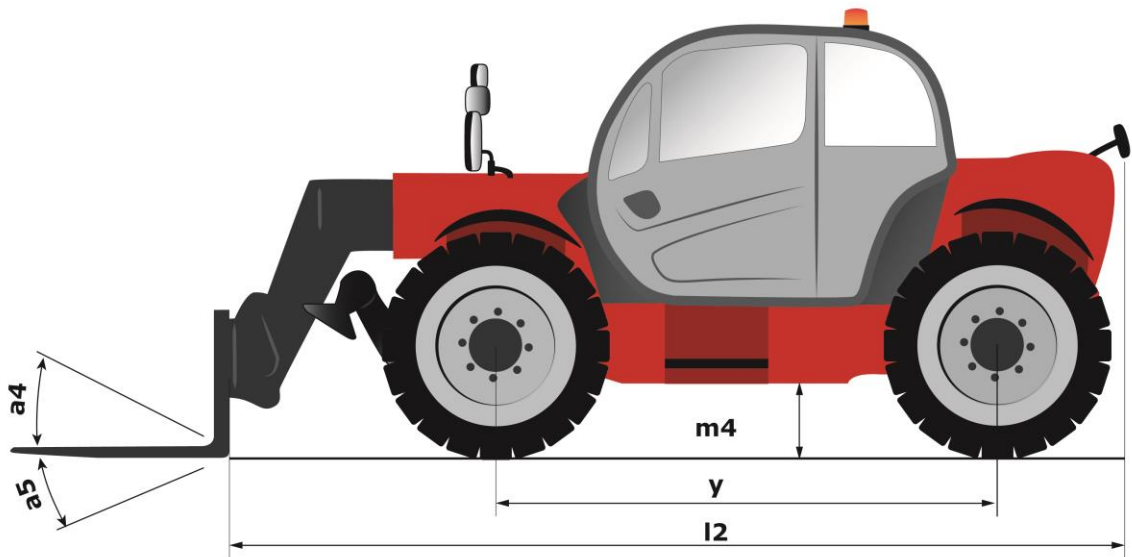
Lifting height	9.98 m	29'6"
Lifting capacity	3000 kg	9842.52 lb
Max reach	7.15 m	23'5"
Max reach capacity	0.85 kg	1 lb
Drawbar pull	8160 dan	18344.409 lbf
Breakout force	5330 dan	11982.31 lbf
Moving speed	25 kmh	15.5 mph
Lifting time (unladen)	6.7 s	
Lowering time (unladen)	5.4 s	
Boom extension time (unladen)	13.6 s	
Boom retraction time (unladen)	8.7 s	
Crowd	2.7 s	
Dump	2.3 s	

---

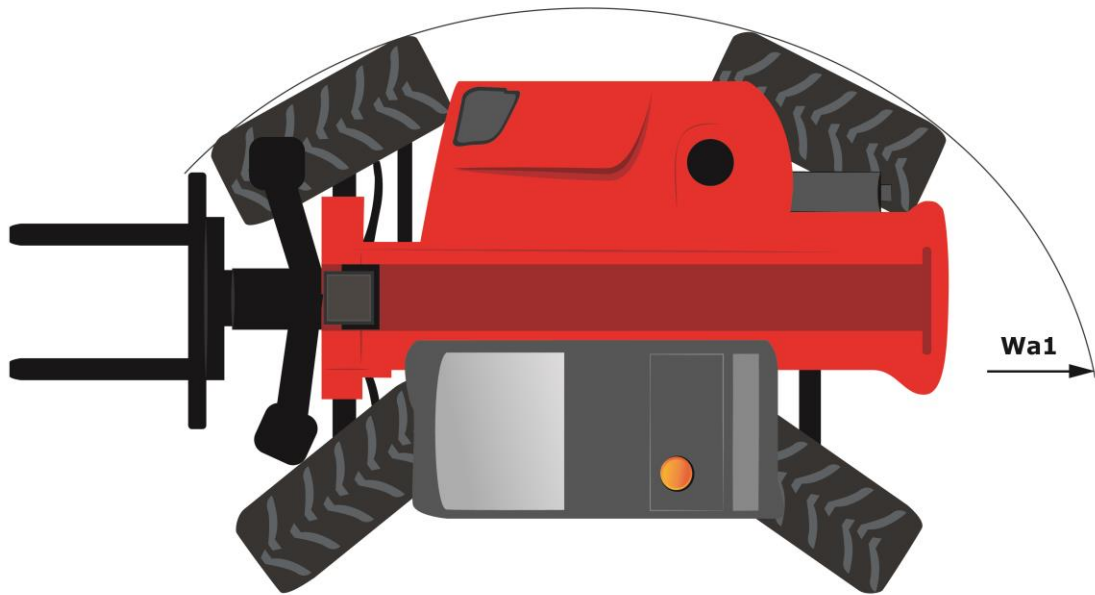
### Dimensions

Length (up to the back of the fork)	4.99 m	16'4"
Wheelbase length	2.69 m	8'10"
Width	2.34 m	6'7"
Height	2.3 m	6'7"
Weight (unladen)	7720 kg	17019 lb
Turning radius	3.75 m	12'0"
Ground clearance	0.45 m	1'6"

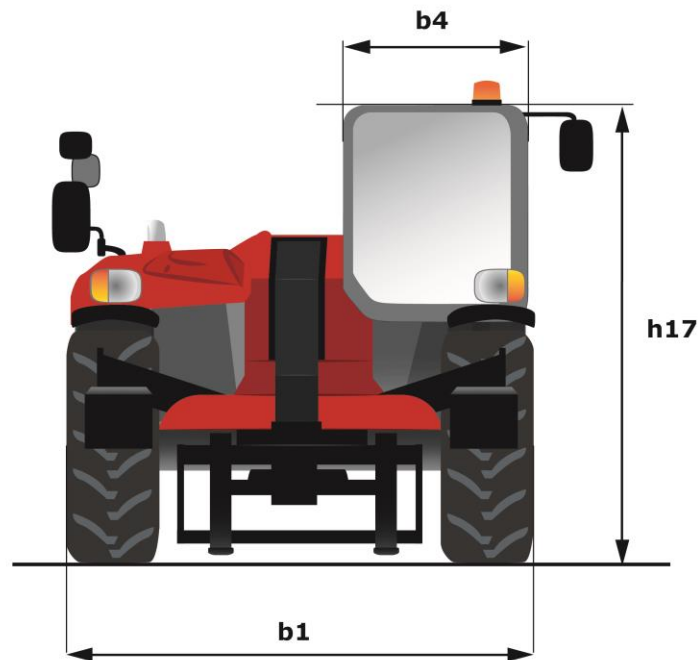
Scale drawing (side view) :



Scale drawing (top view) :



Scale drawing (front/rear view) :



---

#### Engine / Battery

Energy	Diesel	
Engine brand	Deutz	
Engine type	3B / Tier IV Final	
Engine manufacturer type	TD 3.6 L	
Power	75 ch	75 hp
Power	55.4 KW	
Max. Torque @ Rotation	330 Nm @ tr/min	

Total capacity	3621 cm <sup>3</sup>	220.96 in <sup>3</sup>
Injection	Direct	
Cooling	Water	
Transmission type	Torque converter	

---

#### Hydraulic

Pressure	250 bars	
Hydraulic oil tank volume	128 l	33.81 gal

---

#### Other specifications

Standard tyres	Pneumatic
Number of wheels (front/rear)	2/2
Number of drive wheels (front/rear)	2/2
Number of steering wheels (front/rear)	2/2
Tractor European Conformity	Yes
Driving position noise levels	78 dB
Environmental noise levels	104 dB
Vibrations affecting hands/arms	<2.5 m/s